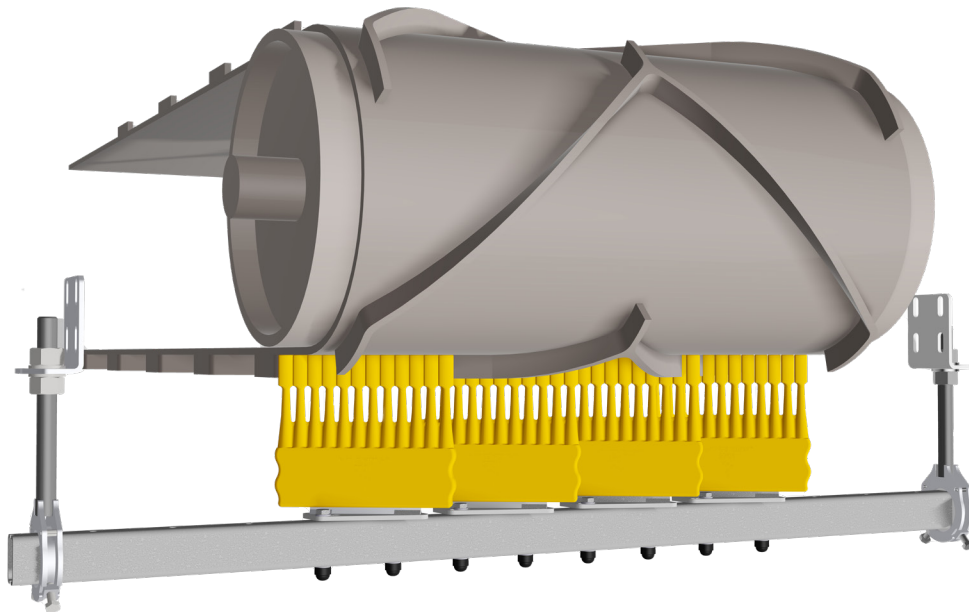


CHEVRON BELT CLEANER 2700

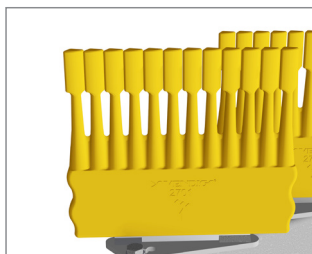


– A belt cleaner for conveyor belts.

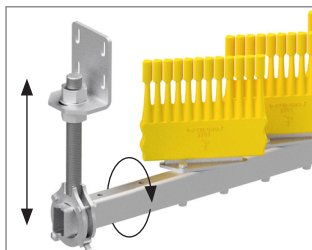
The Chevron scraper is a belt cleaner with polyurethane segments that have specially molded “fingers” to clean profiled conveyor belts. The polyurethane makes the belt cleaner durable. The top of the segment’s are mounted flat against the belt so that the scraper segment cleans the flat part of the belt and knocks the cleats clean. The Chevron segments are angled towards the the scraper beam, providing overlapping fingers for better cleaning.

The holder is sturdy and designed for easy height adjustment with a generously sized adjustment range. The scraper beam can be rotated around its axis in the holder to facilitate handling and correct placement of the scraper. Each segment is easy to remove by hand for replacement or cleaning if necessary.

The fingers in the belt cleaner are flexible and their movements during operation prevent buildup. This makes the Chevron scraper require minimal maintenance compared to, for example, belt brushes.



The design of chevron segment 2701 gives a long lifespan and great cleaning.

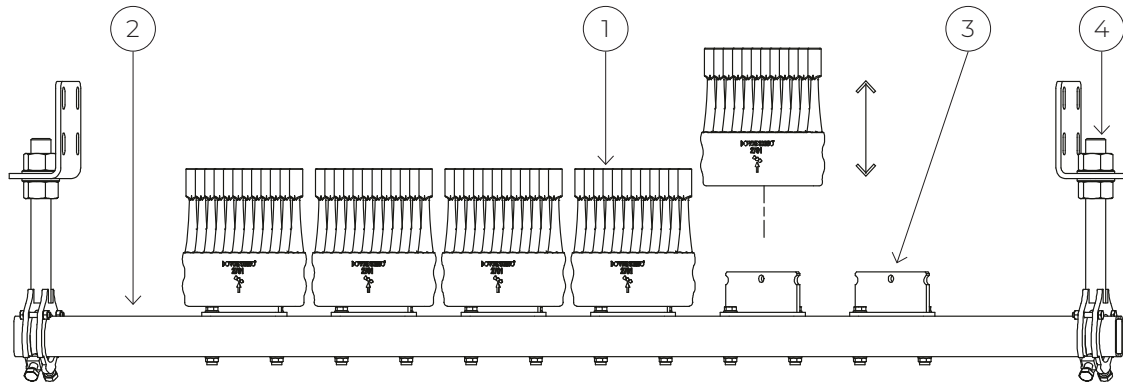


The Holder CS has a large adjustment range in height and allows the beam to be rotated around its axis or locked in the desired position.

SCRAPER BLADE OPTIONS



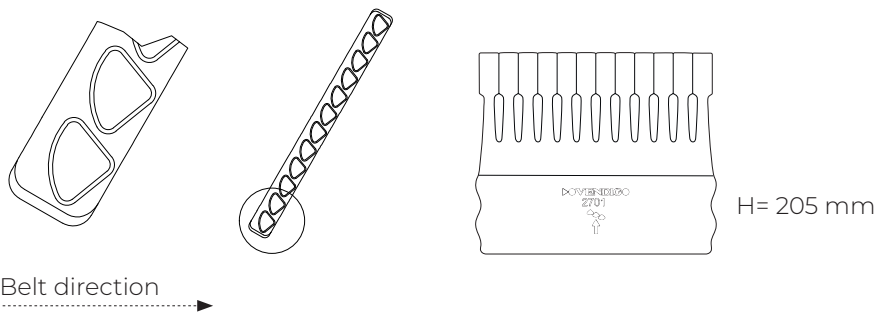
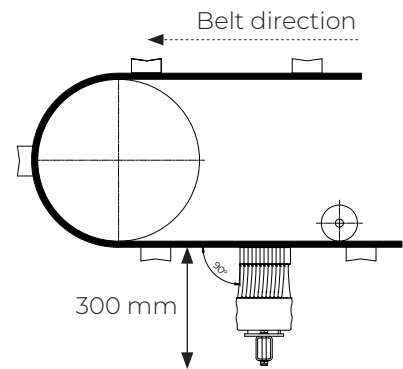
Standard



1. Chevron segment 2701
2. Beam 9772, full length 2,9 m
3. Bracket for Chevron segment 2782
4. Holder CS /CS HD 2780/2781

All steel parts are electro-galvanized as standard.

From B-W 1200 the scraper is supplied with Holder CS HD, 2781.



ART. NO.	B-W	SCRAPER WIDTH	QTY. SEGMENTS	HOLDER	TOTAL LENGTH
2704	400	390	2	M24	900
2705	500	410	2	M24	1100
2706	650	610	3	M24	1300
2708	800	790	4	M24	1500
2710	1000	990	5	M24	1700
2712	1200	1190	6	M30	1900
2714	1400	1390	7	M30	2100
2716	1600	1590	8	M30	2300
2718	1800	1790	9	M30	2500

Wider belt cleaners can be offered on request.