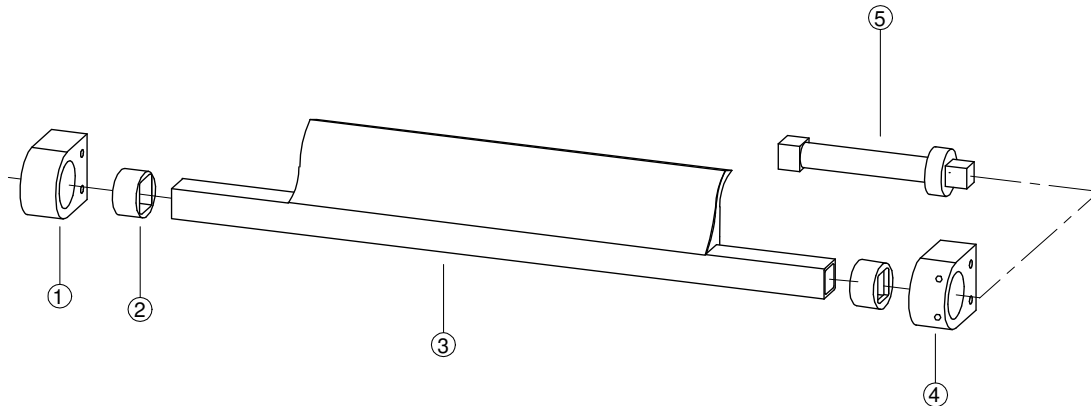


## FITTING THE MINI-SCRAPER 8700



- |                              |               |
|------------------------------|---------------|
| 1. Holder 1                  | art 8640      |
| 2. Polyurethane bush (2 pcs) | art 8642      |
| 3. Scraper blade incl. beam  | art 8723-8732 |
| 4. Holder 2                  | art 8641      |
| 5. Torsion spring            | art 8643      |

### GENERAL INFORMATION

The Mini-Scraper is a pre-scraper with a blade of hardwearing polyurethane. Other parts are of stainless material.

### IMPORTANT

In order to achieve the best scraping results, the following conditions must be met:

The conveyor belt must be free of damage. The belt may otherwise catch on the scraper blade (3), resulting in a breakdown.

The scraper must not be fitted to chevron belts or belts with mechanical joints.

Max. belt speed: 1.6 m/s

Max. temperature: + 50°C in wet environments

Max. temperature: + 85°C in dry environments (ambient temperature + frictional heat)

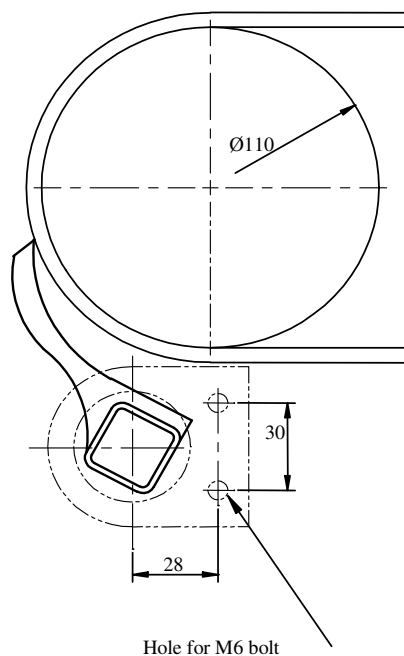
### CAUTION

Always turn off the belt conveyor before installing or carrying out maintenance on the scraper.

Make sure that the belt cannot start while this work is in progress.

## FITTING

1.	The scraper is placed against the drive pulley as shown in the drawing. Avoid placing the scraper so that it is hit by the flow of material.
2.	Make two mounting plates (with holes $\varnothing$ 6.5 mm) and weld these to the frame. Try bolting the holders (1,4) to the mounting plates.
3.	Cut the beam to a suitable length.
4.	Slip the bushes (2) onto the square tube. Push the torsion spring (5) into the square tube (as of beam width 600, the scraper is supplied with two torsion springs).
5.	Bolt the scraper (1-5) to the frame using the bolts supplied.
6.	Set the torsion spring (5) using a spanner. Lock the setting by driving home the two screws into the holder (4).
7.	Readjust the blade pressure as required.



## MAINTENANCE

- Inspect and clean the scraper regularly– we suggest once a week.
- Readjust the scraper pressure so as to achieve optimal cleaning. There must be no vibrations or noise.

## WARRANTY

*Damage to the scraper caused by incorrect handling or in connection with incorrect installation cannot be considered to be covered by warranty if these instructions have not been followed. We therefore accept no claims for any consequential damage or loss.*